

# A Break-through in Performance and Efficiency

Infrared Heater

supraSchwank



with Isotherm  
insulation

Now also with  
modulating operation



**Schwank**  
INNOVATIVE HEATING SOLUTIONS



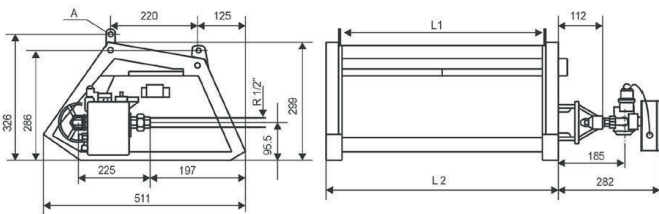
# Infrared Heater– supraSchwank

- High radiant factor of 80.9%\* and therefore extraordinary high efficiency
- Available as single stage, 2-stage or fully modulating versions
- With Isotherm insulation / minimisation of the convection losses
- Patented delta mixing chamber
- Combined high- and low-intensity infrared energy for a high radiant factor
- High-temperature stainless steel refractory mesh

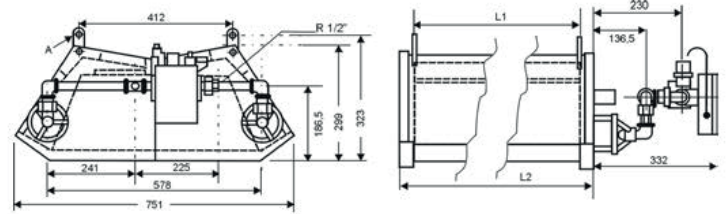
- Schwank ceramic „honeycomb effect“ tiles [ceraSchwank]
- Even and comfortable heat distribution
- Short warm-up times
- Quality, long-life cycle and high comfort
- No dust swirls or draughts with supraSchwank luminous heater
- Quick and easy assembly
- Quality „Made in Germany“

\* Radiant factor of supraSchwank 30 measured by DVGW laboratory according to DIN EN 419-2

supraSchwank 10 / 15 / 20 / 30



supraSchwank 40



		supraSchwank 10	supraSchwank 15	supraSchwank 20	supraSchwank 30	supraSchwank 40
<b>Gas input * [kW]</b>	Nat. gas H / L	7,7	11,5	15,4	23,1	30,8
	Propane	7,7	11,5	15,4	23,1	30,8
<b>Gas consumption in m<sup>3</sup>/h **</b>	Nat. gas H / L	0,77 / 0,90 m <sup>3</sup> /h	1,15 / 1,34 m <sup>3</sup> /h	1,54 / 1,80 m <sup>3</sup> /h	2,32 / 2,70 m <sup>3</sup> /h	3,08 / 3,59 m <sup>3</sup> /h
	Propane	0,60 kg/h	0,90 kg/h	1,20 kg/h	1,80 kg/h	2,40 kg/h
<b>Weight [kg]</b>	Appliance	17,0	22,4	29,0	38,0	46,0
	Control	1,4	1,4	1,4	1,4	1,4
<b>Dimensions [mm]</b>	Length L2	629	906	1184	1738	1181
	Length L1	553	830	1108	1662	1108
<b>CE-Identifikation</b>	CE-0085AU0376					

\* The nominal heat load is the heat quantity supplied by the gas based on its thermal value H<sub>n</sub>

\*\*Gas consumption: Nat. gas H: H<sub>n</sub> = 9,97 kWh/m<sup>3</sup> Nat. gas L: H<sub>n</sub> = 8,57 kWh/m<sup>3</sup> Propane: H<sub>n</sub> = 12,87 kWh/kg [at 0°C / 1013 mbar]

## Applications

High efficiency heater for industrial buildings, warehouses or outdoor heating.

## min. connection pressure

	1-stage	2-stage	modulating
Nat.gas H:	16 mbar	30 mbar	45 mbar
Nat.gas L:	22 mbar	24 mbar	45 mbar
Propane:	32 mbar	65 mbar	65 mbar
Butane:	50 mbar	65 mbar	65 mbar

## max. connection pressure

Nat. gas/ Propane: 100 mbar

## Electrical supply

Single-phase AC  
 · 230 V, N, PE  
 · 50 Hz [approx. 45 VA]

## Exhaust flue indirect

according to DIN EN 13410 or DVGW G 638-1 or ÖVGW G 3/3

## Gas connection

Threaded fitting R 1/2" [male]

## Fixture

The heater to be mounted on 4 points [A] with steel cables or the like on the ceiling or wall brackets attached to the wall.

## United Kingdom

**Schwank Ltd**  
 Suite 21, 50 Churchill Square Business Centre, Kings Hill, West Malling, Kent ME19 4YU  
 Tel.: +44 (0) 208 641 3900  
 Fax: +44 (0) 208 641 2594  
 E-mail: sales@schwank.co.uk  
 Internet: www.schwank.co.uk

## Ireland

**Eurogas Ltd**  
 Hevac Limited Muirfield Drive Naas Road Dublin 12  
 Tel.: +353 1 4191919  
 Fax: +353 1 4584806  
 E-mail: info@hevac.ie

## Australia

**Devex Systems Pty Limited**  
 5/83 Bassett St Mona Vale NSW 2103  
 Tel.: +61 02 9997 2811  
 Fax: +61 02 9997 7852  
 E-mail: info@devexsystems.com.au  
 Internet: www.devexsystems.com.au

## New Zealand

**Energy Products Int.**  
 30 Gallagher Drive, Frankton, Hamilton  
 Tel.: +64 7 839 2705  
 Fax: +64 7 834 4212  
 E-mail: sales@energy-products.co.nz  
 Internet: www.energy-products.co.nz

